

Datum elevation: 24.4 m aMSL
X-coordinate: 497001.0
Y-coordinate: 4727616.0
TD (ft MD): 4046.0
Drilled in: 1985 (PetroCanada)

Scale 1:4000
UWI: B-13 Well: ALBATROSS B-13

Seismic Interpretation
based on reflectivity
(no reflectivity log
available for this well)

Petrophysical
Evaluation

Samples

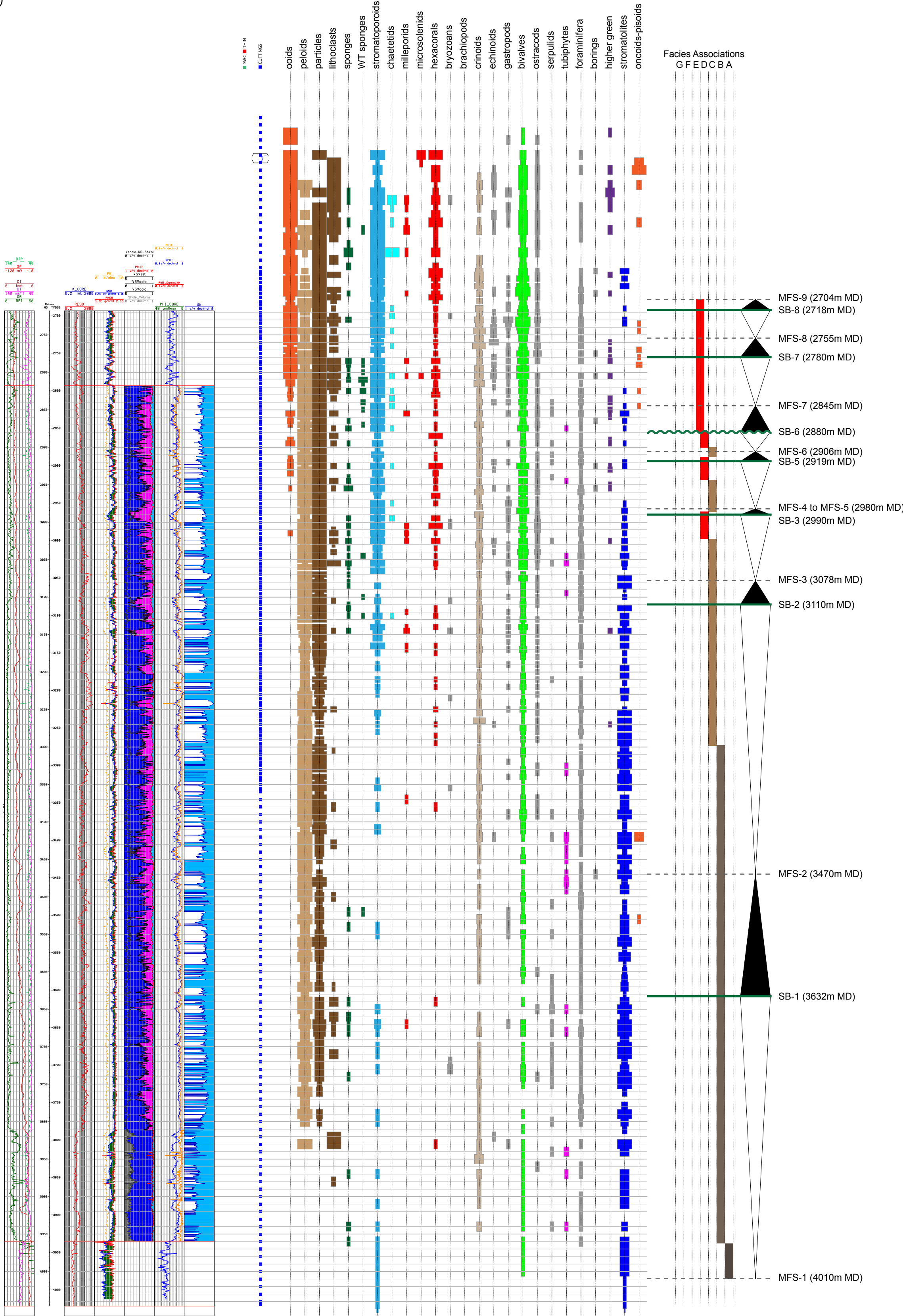
Sedimentological Data
(adapted from GeoTours Consulting Inc.)

Stratigraphic Breakdown

Seismic
horizon
J150

Seismic
horizon
Bac-4
Seismic
horizon
Bac-3

Seismic
horizon
Bac-1/2



PETROPHYSICAL EVALUATION	
	Sandstone
	Claystone
	Limestone
	Dolomite
	Porosity

FACIES ASSOCIATIONS	
	G1 - Shallow-water siliciclastics (delta to prodelta)
	G2 - Muddy (lagoon) platform interior
	F- Mixed carbonate-siliciclastic platform interior
	E- High-energy oolitic sand shoals
	D - "Clear" shallow-water corallgal reef margin
	C1 - "Turbid" shallow-water sponge reef mounds
	C - Proximal foreslope
	B - Distal foreslope
	A - Deep marine shelf

SEQUENCE STRATIGRAPHIC BREAKDOWN	
MFS	Maximum Flooding Surface
SB	Sequence Boundary
MFS	Maximum Flooding Surface